



CSN® AIR HEATER TYPE 841

with axial-flow fan, protection mode IP 20

Application for air heater type 841:

E.g. punctiform heating of workplaces, thermal shielding at doors, heating of building containers and dressing rooms.

consisting of a sheet steel housing,
built-in heating elements, not brought to red heat an axial-flow fan.

Installation: in all position

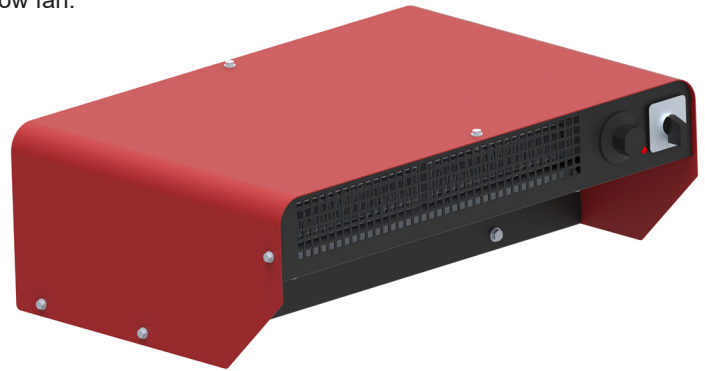
Including indicatin lamp and robust rotaryswitch.

Position 0 = off

Position 1 = 1/3 power

Position 2 = 2/3 power

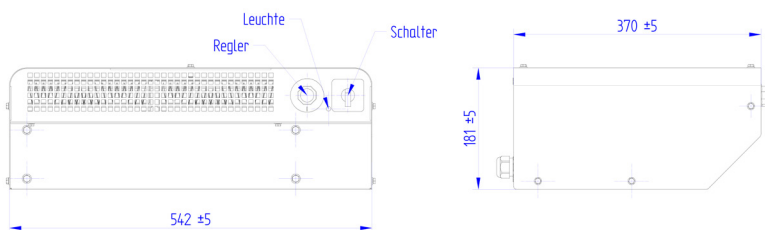
Position 3 = 3/3 power



On the rear of the air heater a 5-core feeding cable of
3 m length with plug is provided for.

Voltage: 400 V A.C.,three-phase (with neutral conductor).

Type	Power kW	changeable kW	approx. housing diemensions in mm			air excape approx. mm	Qty. of heating elements	approx. air capacity freeblowing m³/h
			length	width	height			
841/6	6	2 - 4 - 6	542	370	181	367 x 57	3	725
841/8	7,2	2,4 - 4,8 - 7,2						



Specialist contact person:

Andreas Nottelmann

Phone: +49 (2392) - 692 - 35

Fax: +49 (2392) - 692 - 8935

eMail: andreas.nottelmann@schniewindt.de

Dominik Naumann

Phone: +49 (2392) - 692 - 61

Fax: +49 (2392) - 692 - 8961

eMail: dominik.naumann@schniewindt.de