



CSN® Ex-Space Heater Type 700Ex Flange



The robust space heater type 700 Ex ... is used for heating of resting air in the area of Ex-zone 1 or 21. All ex room heater can be welded onto a mounting flange, this variant has no legs.

Typical fields of applications

- gas regulator stations
- screening plants of sewage treatment plants
- filling stations for gaseous fuels
- colour storage rooms
- gas tankers
- offshore drilling platforms



Technical data:

Connection chamber: increased safety Ex e and provided by the housing Ex t

Mounting space: flameproof encapsulation Ex d and provided by the housing Ex t

surface temperature: - 40° C ... +40° C

type of current: DC, AC, three-phase

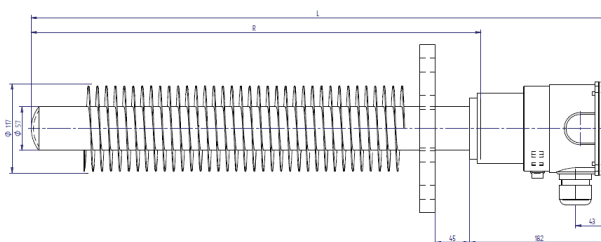
rated voltage: max. 690V

protection mode: IP 66

type of heating elements: exchangeable ceramic heating insert
material: steel varnished, steel varnished-galvanized or stainless steel 1.4301

mounting: flange

label- and cable gland: M20x1,5 - clamping area 5...14mm



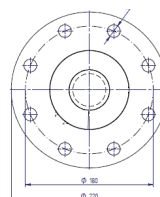
alternative designs:

surface temperature: -60°C ... +60°

manufacturing in Ex d (pressure-resistant housing)

manufacturing for air duct construction

special dimensions on demand



optional addition: Ex-Thermostate

total length L = mm	tube length R = mm	finned length B = mm +/- 10
650	480	310
760	590	420
1170	1000	830
1770	1600	1430
2270	2100	1930

temperatur class	type 700Ex black varnished type 700Ex black varnished/ galvanized	nominal power 230 Volt wattage	Typ 700Ex Edelstahl	Nennleistung bei 230 Volt Watt	Gesamtlänge ca. mm
T1	1050T1	1050	900T1	900	760
	2100T1	2100	2100T1	2100	1170
	4100T1	* 4100	3600T1	* 3600	1770
	5800T1	* 5800	5000T1	* 5000	2270
T2	500T2	500	250T2	250	650
	630T2	750	500T2	500	760
	1530T2	1.600	1000T2	1000	1170
	3000T2	* 3000	1900T2	1900	1770
	4100T2	* 4100	2750T2	*2750	2270
T3	280T3	280	170T3	170	650
	420T3	420	260T3	260	760
	910T3	910	580T3	580	1170
	1680T3	1680	1050T3	1050	1770
	2300T3	2300	1480T3	1480	2270
			1880T3	1880	2770
T4	140T4	140	90T4	90	650
	210T4	210	140T4	140	760
	460T4	460	290T4	290	1170
	860T4	860	540T4	540	1770
	1190T4	1190	740T4	740	2270

*400 V 3~ / other executions on demand.

Special contact person:

Janina Schulte

Phone: 0049 (02392)69237

Fax: 0049 (02392)6928937

eMail: janina.schulte@schniewindt.de

Michaela Spelsberg

Phone: 0049 (02392)69239

Fax: 0049 (02392)6928939

eMail: michaela.spelsberg

@schniewindt.de