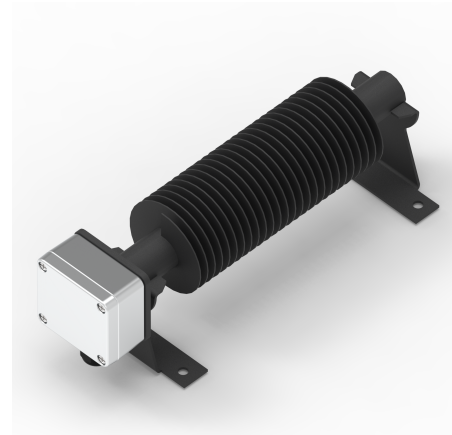


# CSN<sup>®</sup> finned tube radiator type 600

## DESCRIPTION

Our hard-wearing room heater with fins is ideal for industrial use where space is limited and heating requirements are low. It is virtually indestructible even under extreme conditions. Optionally controllable by the external controller type FTR, it offers customisable heat output and reliability in any environment. Please note that no protective cage is provided for this radiator to ensure maximum efficiency.



## PRODUCT ADVANTAGES

- Fast and continuous heat
- Easy to operate
- Maintenance-free operation
- Durable and extremely robust
- Uncomplicated installation without complex planning

## TECHNISCHE DATEN

|                       |                                |
|-----------------------|--------------------------------|
| Medium                | Air                            |
| Installation position | horizontal                     |
| Total length:         | 284; 534 mm                    |
| Performance           | 250; 500 W                     |
| Tension               | 230 (up to 500 V on request)   |
| Protection class      | IP 53                          |
| Material              | Painted steel; stainless steel |
| Execution             | /I = 250 W<br>/2 = 500 W       |

