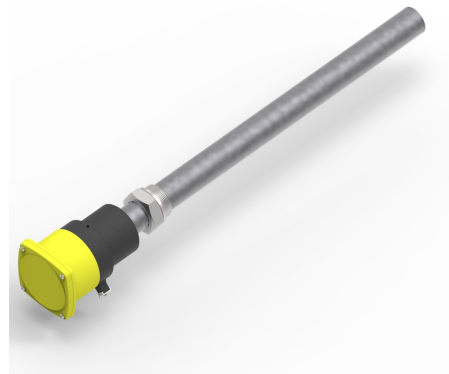


CSN® cartridge radiator type 93EX

DESCRIPTION

The CSN® EX cartridge heater type 93../AH/P.-Exdet has been specially developed for the precise heating of liquid or gaseous media in Ex zones I and 2I. Equipped with a high-performance ceramic heating element, a robust protective tube (cartridge tube) and a reliable Ex connection cover, it is ideal for heating demanding applications such as hydraulic, gear, compressor, refrigeration machine and heat transfer oils as well as highly corrosive media. The advantage of a replaceable ceramic heating element enables easy replacement without draining the medium, while highly corrosion-resistant protective tubes are available as an option.



PRODUCT ADVANTAGES

- Manufactured in accordance with ATEX certificate & IECEx certificate
- Heating element can be replaced without draining the tank
- Certificates such as EAC (Eurasian market), CCC (Chinese market), PESO (Indian market)
- Individually configurable design possible - power / voltage / materials
- Also available for operating temperatures >100°C

TECHNISCHE DATEN

Medium	Water; hydraulic oil; gear oil; oil; thermal oil; diesel / heating oil; AdBlue
Power	0.25 to 20 kW
Voltage	110 to 690 V
Version Connection thread	G 1 1/2", G 2", G 2 1/2" or
Connection flange version	DIN EN 1092-1; ASME
Materials Connection thread / connection flange	Steel; ASME; 1.4404 (AISI 316L); 1.4541 (AISI 321); 1.4571 (AISI 316 Ti)
Heating element	Ceramic
Sheath material	Steel; 1.4541 (AISI 321); 1.4571 (AISI 316 Ti)

Installation length	300 to 5000 mm
Installation position	horizontal vertical on request
Controller	Mounted controller & limiter combination Ex-Therm AT (control range 0-120°C)
Limiter	Mounted controller & limiter combination Ex-Therm AT (control range 0-120°C)
Operating pressure	0.5 bar g
Flange size DIN EN1092-I	NW 32 to NW 80
Pressure stage flange DIN EN1092-I	PN6 to PN40
Flange size ASME	2" to 4"
Pressure rating ASME	150lbs to 300lbs
Execution	93F = for liquids 93GB = for gases, Ex zone on heating element 93GN = for gases, no Ex zone on the heating element

